

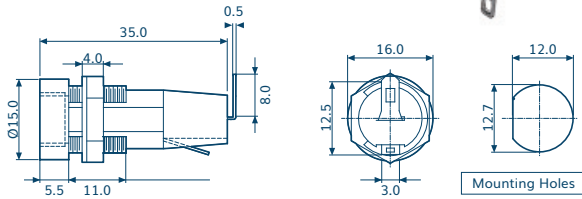
Conquer fuse holders feature for easy removal, clearly printed/imprinted "fuse" designation for easy panel identification and keyed mounting hole requirement for anti-rotation safety. All fuse holders include mounting washer and solder lugs for wiring.

- Insulating body : flame retarding UL 94 V0 thermoplastic material.
- Contact : Nickel or Tin plated copper alloy.

### CQ-206S

RoHS

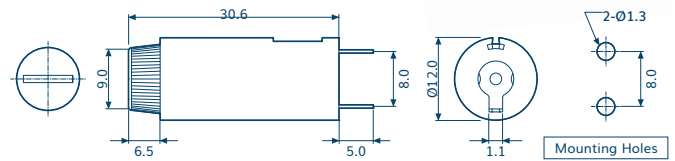
For 5x20mm Fuse



### CQ-206C

RoHS

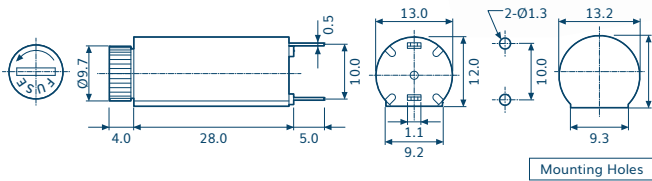
For 5x20mm Fuse



### CQ-206CV

RoHS

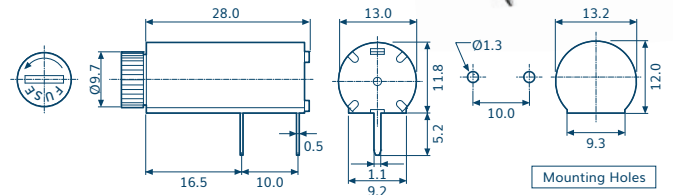
For 5x20mm Fuse



### CQ-206CH

RoHS

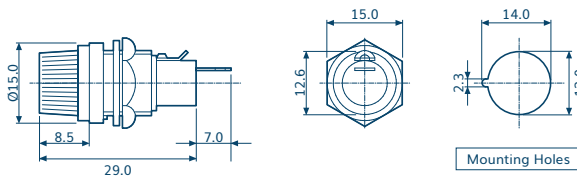
For 5x20mm Fuse



### CQ-206HU

RoHS

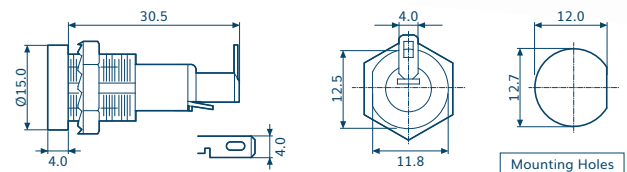
For 5x20mm Fuse



### CQ-206D

RoHS

For 5x20mm Fuse



Item Number	CQ-206S	CQ-206C	CQ-206CV	CQ-206CH	CQ-206HU	CQ-206D
Rated Current	10A / 250V	10A / 250V	10A / 250V	10A / 250V	10A / 250V	10A / 250V
Insulation Resistance At 500 VDC	100MΩ Min	100MΩ Min	100MΩ Min	100MΩ Min	100MΩ Min	100MΩ Min
Contact Resistance	5mΩ At 1A DC	5mΩ At 1A DC	5mΩ At 1A DC	5mΩ At 1A DC	5mΩ At 1A DC	5mΩ At 1A DC
Dielectric Strength For 60 Sec	AC1500V Min.	AC1000V Min.	AC1500V Min.	AC1500V Min.	AC2000V Min.	AC1500V Min.
Screw Driver Knob Approval						



Conquer fuse holders feature for easy removal, clearly printed/imprinted "fuse" designation for easy panel identification and keyed mounting hole requirement for anti-rotation safety. All fuse holders include mounting washer and solder lugs for wiring.

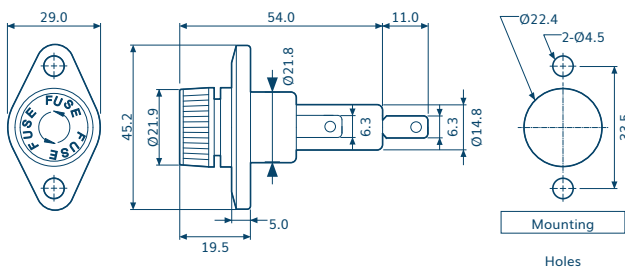
- Insulating body : flame retarding UL 94 V0 thermoplastic material.
- Contact : Nickel or Tin plated copper alloy.

## CQ-215

RoHS



For 10.3x38.1mm  
(5AG) Fuses  
Special Fuse Holder

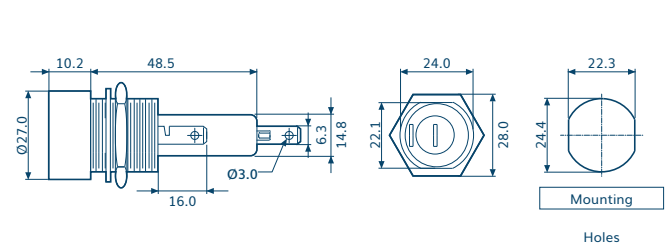


## CQ-225

RoHS

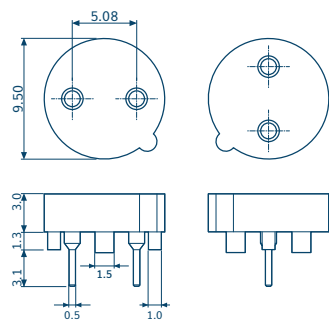


For 10.3x38.1mm  
(5AG) Fuses  
Special Fuse Holder



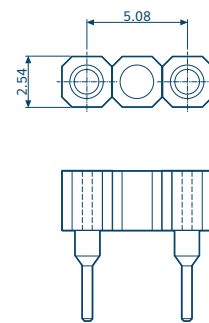
## MICROFUSE HOLDER(P)

For MET Fuse



## MICROFUSE HOLDER(C)

For MST Fuse



Item Number	CQ-215	CQ-225	MICROFUSE HOLDER(P)	MICROFUSE HOLDER(C)
Rated Current	30A / 600V	30A / 600V	-	-
Housing	-	-	PBT UL94-V0	Polyphenylene sulfide UL94-V0
Insulation Resistance	100MΩ Min	100MΩ Min	10 <sup>3</sup> MΩ at V=100V	10 <sup>3</sup> MΩ at V=100V
Temperature Range	-	-	-55°C to 125°C	-55°C to 125°C
Inner Clip	-	-	Beryllium copper, gold plated	Beryllium copper, gold plated
Plating	-	-	Tin	Tin
Max. Current Rating	-	-	6.3A	6.3A
Contact Resistance	5mΩ At 1A DC	5mΩ At 1A DC	<20mΩ	<20mΩ
Dielectric Strength For 60 sec	AC3000V Min.	AC3000V Min.	-	-
Insertion Force	-	-	<3kgf	<1kgf
Withdrawal Force	-	-	>0.05kgf	>0.05kgf